

This off-campus housing brochure aims to help our international students find a housing facility that is suitable to their needs and one that will more or less satisfy their requirements in terms of safety, security, and available amenities.

The University Housing Committee regularly visits and accredits these housing facilities to ensure that students' safety and welfare are guaranteed. Those that are marked with asterisk (\*) are the accredited off-campus residences of DLSU. There are also other condominiums in this brochure that are located within the 200-meter radius of DLSU, however the DLSU Committee is yet to visit these condominiums for accreditation. Students should exercise good judgment in choosing a place which will serve as their second home while studying at DLSU.

The decision in choosing which housing facility is most suitable and convenient rests on the international students as well as their parents or guardians. Students are advised to seek guidance from parents or guardians when finally deciding which residence facility to rent.

Always be vigilant and exercise caution when renting a place. Some helpful tips and reminders before, during and after finding a residence facility can be found in this brochure.

Finally, remember to contact the building administrator, manager or the landlord, inspect the premises, and select the most suitable accommodation that will best serve your needs before making the final decision.



EXTERNAL RELATIONS AND INTERNATIONALIZATION OFFICE  
**INTERNATIONAL CENTER**



## **International Students' Guide to Off-Campus Residences**

**INTERNATIONAL CENTER**  
SJ Building Rm. 207  
Tel.: (02) 525-6727  
(02) 524-4611 Loc. 289  
erio@dlsu.edu.ph

## @HOME DORMTEL & CONDOS (\*)

### ADDRESS

#2470 Del Carmen St. Manila  
Manila

### Contact Person/s:

Ms. Marmi Frace Ong Sutilo  
522-2913, 353-8315

### A Home Away from Home!

HOME Dormitel & Condos was built for comfort and with a tranquil environment cozy enough to be your second home. HOME is an all female dormitory that caters to the needs of the urban student recreating the warm feeling of your own home.

### Amenities:

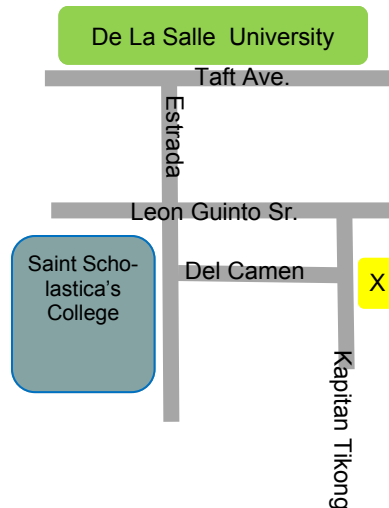
- WiFi Ready
- Laundry Cages
- Backup Generator
- Provision for Cable
- Provision for telephone lines
- 24 hr. security surveillance camera
- 2 fire exits located on each floor
- Rentable parking space



<http://www.athomedorm.com>

### Monthly Rates:

10000– 12000PHP



## QUICK REFERENCE LIST

- *Guidelines and Reminders When Searching for a Place*
- **The Lasallian Center**
- **The Providence Tower**
- **Cara Celine Dormtel**
- **Burgundy Transpacific Place**
- **EGI Taft Tower Dormitories & Condominiums**
- **Tahilan Residence and Study Center**
- **Locator Chart within the Vicinity Map of DLSU**
- **Residencia De Dios**
- **Cityland Vito Cruz Tower**
- **Burgundy Westbay Tower**
- **Madison Square Condominium**
- **Homelike Ladies Dormitory**
- **Torre Lorenzo**
- **@Home Dormtel & Condos**

For inquiries, you may email: [housing@dlsu.edu.ph](mailto:housing@dlsu.edu.ph)

You can also visit the International Students' Website at <http://www.dlsu.edu.ph/students/international/survival/> for the online listing of the accredited housing facilities.

The members of the DLSU Housing Committee visit these housing facilities for the yearly accreditation and re-accreditation every Third Term of the Academic Year in preparation for the opening of classes. Stakeholders may also refer possible housing facilities nearby DLSU vicinities for visitation and ocular inspection of the committee. Please send an email to [housing@dlsu.edu.ph](mailto:housing@dlsu.edu.ph) for inquiries.

## CARA CELINE DORMTEL (\*)

**ADDRESS**  
#2450 Del Carmen corner Tikong  
Streets Malate, Manila 1004

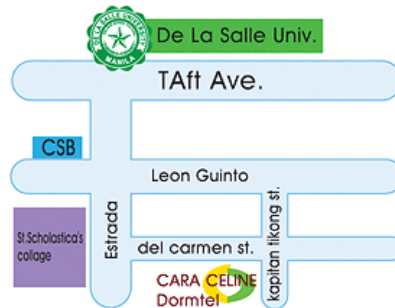
**Contact Person/s:**  
Ms. Bernadeth Lagman  
526-5703, 526-5704, 526-5728

### The First Hotel-Type Dormitory in The Philippines!

A hotel like dormitory, Cara Celine Dormtel offers the comforts of a hotel and the security of a second home primarily established to cater exceptional service and convenience to our guests.

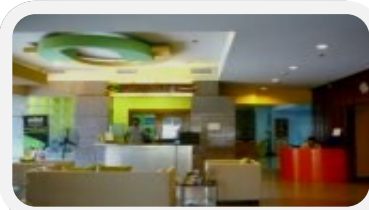
#### Amenities:

- Room furnished w/ beds, cabinets and Study Table
- Toilet & Bath for each room w/ hot & cold water
- Free 24 hour centralized Air-conditioning
- 24 Hour Security & CCTV System
- Internet Ready Rooms (optional)
- Study Hall w/ Internet Access
- Gym, lobby lounge & Hotel Suites
- Telephone & Intercom System
- Exclusive Floors for Boys/Girls
- Free Daily Cleaning Service



- Backup Power Generator

**Monthly Rates:**  
5500-10000PHP



caracelinedorm@yahoo.com

## MADISON SQUARE CONDOMINIUM

**ADDRESS**  
#2574 Taft Avenue  
Malate, Manila

**Contact Person/s:**  
Ms. Marivic  
Tel: 526-1882 Cel: 0917-8031385

**Affordable housing in an accessible place! Just few minutes walk and you're at DLSU!**

#### Accommodation and Amenities:

- Unfurnished studio units
- Semi-furnished units
- Bedspace—Fully furnished studio units
- With individual toilets and bath
- Aircon
- Refrigerator
- Television
- Inclusive of Association dues

**Monthly Rates:**  
10000—13000PHP



## HOMELIKE LADIES DORMITORY (\*)

**ADDRESS**  
#950 Kapitan Tikong Street  
Malate, Manila

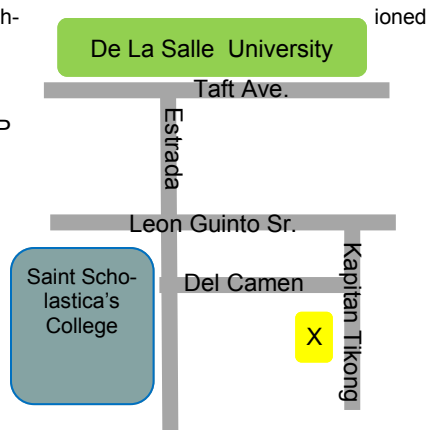
**Contact Person/s:**  
Rosa Bella Reyes  
525-1580

There's no place like home! Being far from home is not so sad anymore. At Homelike Ladies Dormitory, you will enjoy the ambience of being just like "at home", from the cozy atmosphere to the amenities that will delight you with simplicity and comfort.

### Amenities:

- CCTV camera in hallways
- Smoke detectors and fire alarms
- Good garbage collection system
- Personal laundry allowed
- Cooking allowed, with free use of available kitchen and cooking utensils
- With aircon, water heater, cushioned bed & refrigerator

**Monthly Rates:** 800-10000PHP



## THE PROVIDENCE TOWER (\*)

**ADDRESS**  
#2471 Leon Guinto St. Cor.  
Estrada St., Malate, Manila

**Contact Person/s:**  
Susan, Rose, Diesel or Madel  
664-3263; 523-8307; 664-9212

### A Place Accessible by Public Transportation!

Providence Tower is just steps away from the three major universities – St. Scholastica's College, College of St. Benilde and De La Salle-Taft.

### Amenities:

- 2 high—speed elevators & 24/7 security
- CCTV cameras in hallways/elevators
- Well-maintained building
- Good garbage collection system
- Water refilling station
- Fitness gym and Restaurant
- With aircon, water heater, bed & refrigerator
- Association dues include



**Monthly Rates:**  
12500 to 16000PHP

<http://www.providencetowermanila.com/>

1 Cityland Vito  
Cruz Tower

2 Burgundy Westbay  
Tower

3 Torre Lorenzo

4 Madison Square

6 Burgundy

5 EGI  
Taft  
Tower

7 The Providence  
Tower

8 Tahilan  
Residence

9 @Home Dormitel

12 Cara  
Celine Dormitel

13 Lasallian  
Center

10 Residencia De Dios

11 Homelike Ladies



## The LASALLIAN CENTER (\*)

**ADDRESS**  
#969 Augusto Francisco Street  
Malate, Manila

**Contact Person/s:**  
Ms. Wheng De La Cruz– Mercado  
(02) 523-4148 loc. 504  
(02) 5233308/ (02) 5256801

### The Academic Community!

The Lasallian Study Center is owned and managed by De La Salle University, established to provide a safe, secure, convenient, and decent home through a holistic program of activities, healthy living facilities, and an atmosphere conducive to study.

#### Amenities:

- Bedrooms (single/ double/ dorm style)
- Canteen/ Dining hall
- Prayer room
- Study area
- Mini-library area
- Garden and recreation area



The Lasallian Center

## TORRE LORENZO 1 (\*)

**ADDRESS**  
#2587 Taft Ave. Cor. P. Ocampo Street, Malate, Manila

**Contact Person/s:**  
Ms. Celine Marie F. Joson  
(02) 310-8888

### The Best Address— Right Across La Salle Taft!

Built in 2000 on prime space on the corner of Taft Avenue and Vito Cruz Street, Torre Lorenzo has earned a solid reputation for superior amenities and efficient property management.

#### Amenities:

- Pool
- 4 Hi speed elevator
- Study hall
- Wi-Fi enabled
- Gym
- Walking path
- Function rooms
- Roof deck
- Fire alarm/sprinkler system
- Reserved water supply



Torre Lorenzo 1



<http://www.2torrelorrenzo.com>

#### Monthly Rates:

>15000-38000PHP



## RESIDENCIA DE DIOS (\*)

### ADDRESS

#943 Estrada Street  
Malate, Manila

### Contact Person/s:

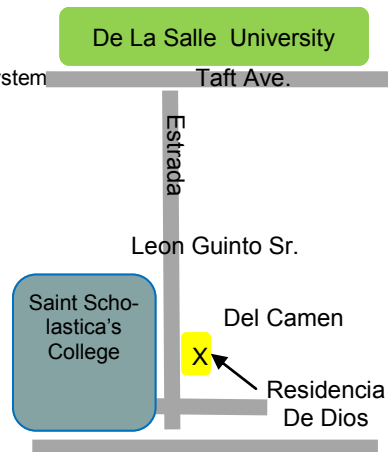
Elsa and/or Marie  
Tel: 5267876 or 516-3380

### A dormitory compound that feels like home!

A place where people share snacks, finishes a group work at the study lounge, and hangout at the patio!

### Amenities:

- Intercom system & telephone line
- Cable TV
- 24-hours security & surveillance system
- Metered water and electricity
- Strong water supply
- Back-up generator
- Canteen & convenience store
- Study lounge
- Patio
- Parking area
- Visitor's suite
- Daily cleaning & laundry services



### Monthly Rates:

3500—9750PHP

<http://residenciadediosdorm.multiply.com/>

## TAHILAN RESIDENCE & STUDY CENTER (\*)

### ADDRESS

#2396 Leon Guinto Street  
Malate, Manila

### Contact Person/s:

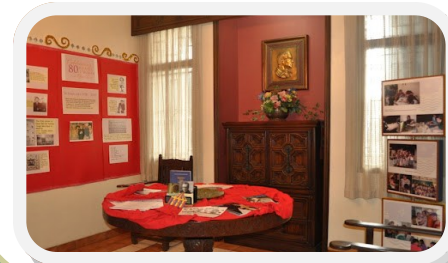
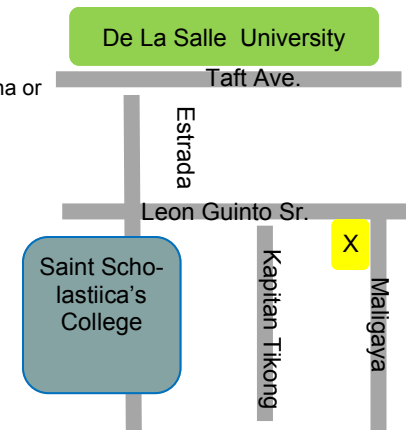
Rita Esguerra, Bernadette Balon  
Tel: 525-7574 Fax:5366342

### More than a place to stay!

Tahilan Residence and Study Center envisions the holistic development of future women leaders of society by providing a program of activities and a proper atmosphere that fosters in each one the true value of university life and the development of an authentic Christian character.

### Amenities:

- Air conditioned library
- Roof deck convertible to a sports arena or open theater
- Computer and discussion rooms
- Private chapel with daily mass
- Spacious dining rooms
- Comfortable bedrooms
- Reception services
- 24hr security service
- Emergency exits and fire alarm system



### Monthly Rates:

14400-17800PHP

<http://www.tahilan.com>

## BURGUNDY WESTBAY TOWER

**ADDRESS**  
#820 Pablo Ocampo Street  
Malate, Manila

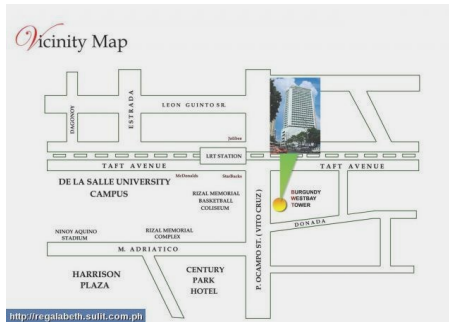
**Contact Person/s:**  
Ms. Estrell Nemenio  
Tel: 354-1275; 523-0853

### A Prime Location in The Vito Cruz-Taft Area!

A 26-storey residential condominium with commercial spaces on the ground floor up to the lower fourth level. It is in , within the vicinity of top schools, as well as dining, shopping, and cultural establishments.

#### Amenities:

- Elegant Lobby
- 24 Hour Security
- Elevator System
- Standby generators
- Fire alarm & sprinkler system
- Provision for water heater
- Individual Electric and Water Heater
- Provision for aircon unit
- MATV and cable TV ready
- Garbage chute
- Clothes drying cages
- Individual mailbox
- Swimming pool



<http://regabeth.suff.com.ph>



<http://www.burgundygroup.net>

**Monthly Rates:**  
8400-20000PHP

## BURGUNDY TRANSPACIFIC PLACE

**ADDRESS**  
#2444-A Taft Avenue  
Malate, Manila

**Contact Person/s:**  
Ms. Anna Lanipa  
Tel: 404-0076

### Exquisite Yet Affordable!

Burgundy Transpacific Place exudes the convivial feeling of relaxation and security. It guarantees accessibility to all schools and other frequently visited landmarks in the Metro.

#### Amenities:

- Bio-metric security system
- Lobby
- Fire alarm
- Sprinkle system
- Individual mail box
- Function rooms
- TV
- Internet
- View deck
- Swimming pool



<http://www.burgundygroup.net>

**Monthly Rates:**  
13000-25000PHP



## EGI TAFT TOWER DORMITORIES AND CONDOMINIUM

### ADDRESS

#2339 EGI Taft Tower  
Taft Avenue  
Malate, Manila

### Contact Person/s:

Ms. Emily Baylon  
Tel: 302-6420; 304-6418

### One of The Lowest Rates Always Ready for Occupancy!

Situated right beside De La Salle University, EGI Taft Towers offers a walking distance place to stay with more than satisfactory facilities but still with affordable price.

### Amenities:

- Individual comfort rooms
- Shower
- Aircon
- Furnished rooms
- Refrigerator
- Lobby areas per floor for guests
- Secured area
- Television
- Wi-Fi



**Monthly Rates:** 5000-5500PHP



<http://egiresortandhotel.com/>

## CITYLAND VITO CRUZ TOWER

### ADDRESS

#720 Pablo Ocampo Sr. Avenue  
Malate, Manila

### Contact Person/s:

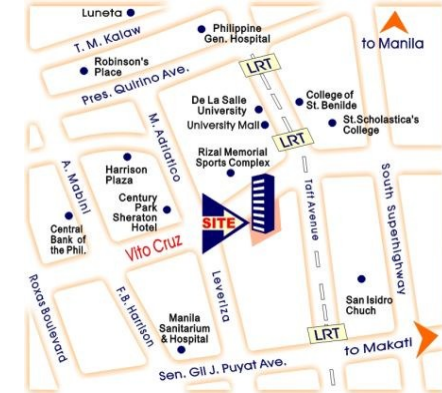
Ms. Karen Cuadra  
567-3333

### We Commit, We Deliver.

A fusion of function and elegance -- with 32-storey office, commercial and residential units. Strategically located at Vito Cruz Manila, CITYLAND VITO CRUZ TOWER I is just a few steps away from various commercial complexes, schools and universities, churches, hospitals, hotels and restaurants.

### Amenities:

- Swimming pool
- Spa and Gym
- Separate sauna for men and women
- Laundromat
- Jogging areas located at the penthouse
- Automatic fire suppression system / central fire alarm system
- emergency power back-up system
- 24-hour association security



### Monthly Rates:

8000-15000PHP

<http://www.citylandcondo.com/>



[www.google.com/imgres?q](http://www.google.com/imgres?q)

**Before you begin a search... try to review the following questions / concerns with your parents or guardian**

- ◆ **What kind of residence unit do you want to live in? (Dormitory? Apartment? Condominium? Dormitel? Bed Space?)**
- ◆ **What are your transportation needs? (Do you own a car? Is the place walking distance going to school? Are public transportations available?)**
- ◆ **What furnishing/amenities are essential? (Do you need a fully-furnished place? A prayer room? What are the private and common areas? )**
- ◆ **What services do you need to be available? (Laundry? Cooking? Room maintenance?)**
- ◆ **What are your financial means? (Can you afford the rent? What is the mode of payment? Do they accept money transfer? Post dated cheques?)**

**The guide questions above can help you significantly in deciding what residence facility is most suitable for you.**

### ***While searching for a place...***

- **Use the information contained herein as a guide.**
- **Consult with other students or friends from DLSU for the reputation of the residence/ establishment.**
- **Inspect the actual physical condition of the unit or place you intend to rent or lease.**
- **Review the conditions written in the contract or lease (rate, deposit, advance, termination, additional costs, restrictions, damages, inspections, etc.)**
- **Check the security and sanitation (alarms, clean and free from disease-carrying pests, etc.)**
- **Check the fire safety of the unit (fire escape, smoke detectors, alarms, sprinklers, etc.)**

### ***After moving in...***

- **Complete a thorough inventory of your unit.**
- **Always get a written receipt from your landlord when you pay your rent or deposit.**
- **Keep a record of your transactions.**
- **Report to the landlord/administrator/manager any problem regarding facilities and accommodation.**